



# WX SERIES APPLICATION ACCELERATION PLATFORMS

## Product Overview

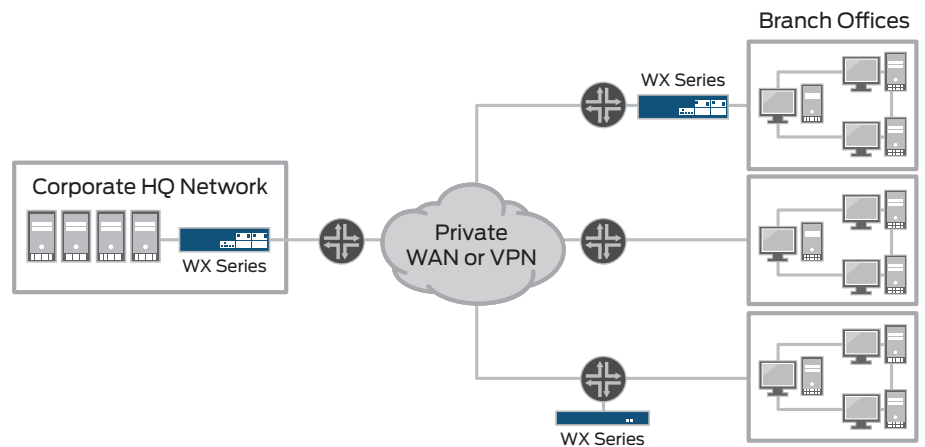
The Juniper Networks WX Series Application Acceleration Platforms provide distributed enterprises with a scalable solution for accelerating the delivery of client-server and web-based business applications and services – including ERP, CRM, e-mail and file services as well as voice, video and terminal services such as Citrix® – over the WAN. Based on the comprehensive WX Series Framework, which defines the elements required to accelerate business operations over wide-area links, the WX Series optimize existing WAN resources and improve application response times by providing a more LAN-like experience for remote and branch-office users.

## Product Description

The Juniper Networks® WX Series Application Acceleration Platforms, members of a larger family of WAN optimization solutions from Juniper Networks, provide distributed enterprises with a cost-effective method for accelerating mission-critical business applications, as well as voice, video and terminal services, over wide-area networks, maximizing WAN investments and improving application response times for branch office users.

The WX Series improve application performance over the WAN by eliminating redundant transmissions, accelerating TCP and application-specific protocols, prioritizing and allocating access to bandwidth, and ensuring high application availability at sites with multiple WAN links.

The WX Series communicate constantly to provide distributed stateful intelligence about the entire network, exchanging vital information such as topology, reachability, and path-performance metrics. The WX Series also interoperate with their companion WAN optimization devices, the Juniper Networks WXC Application Acceleration Platforms, which include onboard hard drives to support the WX Series Framework's Network Sequence Caching technology.



WX Series platforms are deployed on the LAN side of the WAN router, supporting flexible deployment options.

Through integrated WebView device management software, the WX Series also provide unprecedented visibility into WAN performance. With the WebView software, managers can identify top talkers, monitor application throughput, performance and packet distribution across the WAN, review acceleration statistics, and create Executive Summary reports that provide a high-level overview of important performance characteristics.

The WX Series family includes five members: the WX15, WX20, WX60, WX100, and WX Stack.

**WX15:** The WX15 Application Acceleration Platform features two copper fail-to-wire 10/100 Ethernet ports and supports total reduction throughput speeds ranging from 64 Kbps to 1 Mbps. Designed for small branch office applications, the WX15 can support up to six connections to other branch office or data center WX Series or WXC Series devices.

**WX20:** The WX20 application acceleration platform offers two copper fail-to-wire 10/100 Ethernet ports and supports total reduction throughput speeds ranging from 64 Kbps to 2 Mbps. Designed for small to medium-sized branch office deployments, the WX20 supports up to 10 connections to other branch or data center WX Series or WXC Series devices.

**WX60:** The WX60 application acceleration platform, designed for large branch office and small data center applications, features two copper fail-to-wire 10/100/1000 Ethernet ports and supports total reduction throughput speeds ranging from 512 Kbps to 20 Mbps. The WX60 also supports up to 110 connections to sites where other WX Series or WXC Series platforms are installed.

**WX100:** The WX100 application acceleration platform offers two copper fail-to-wire 10/100/1000 Ethernet ports or two fiber 1000 Ethernet ports and supports total reduction throughput speeds ranging from 1 Mbps to 20 Mbps. Designed for large branch office or data center deployments, the WX100 supports up to 105 connections to other WX Series or WXC Series branch office or data center devices.

**WX Stack:** The WX Stack consists of one WX100 platform and up to six WX60 clients working together as a single unit, delivering a scalable solution for the data center that provides total reduction throughput speeds up to 155 Mbps and supports up to 660 connections to WX Series or WXC Series platforms distributed throughout the enterprise. New client units can be added to the WX Stack incrementally, as needed, to keep pace with growing demands. Multiple communities of WX Series devices and WX Stacks can also be configured to support an unlimited number of locations.

## Features and Benefits

### Compression

The patented Molecular Sequence Reduction (MSR) technology enables WX Series platforms to deliver up to a 10-fold increase in effective WAN capacity, providing immediate congestion relief for all IP-based traffic, including TCP- and UDP-based applications, while allowing businesses to avoid costly WAN upgrades. The MSR algorithm recognizes repeated data patterns and replaces

them with labels, dramatically reducing WAN transmissions and improving overall application performance. Operating in memory, the MSR dictionary can store hundreds of megabytes of patterns for a broad cross-section of application types, from short chatty ones to those with longer patterns.

### TCP Acceleration

The WX Series platform's Packet Flow Acceleration (PFA) technology liberates data traffic from limitations imposed by TCP, increasing throughput across the WAN and accelerating applications on low-bandwidth or high-latency connections between WX Series or WXC Series platforms. Forward Error Correction (FEC), a component of PFA, limits the need for retransmissions on "lossy" networks such as satellite links by making use of recovery packets to reconstruct lost transmissions.

### SSL Optimization

The WX Series SSL acceleration capabilities provide SSL encrypted applications like web-based (HTTPS), mail (imaps/pop3s/smtps), and directory services (LDAPS) with the same performance benefits as unencrypted applications. Once the applications certificates and private keys are installed on the WX Series, they learn on the fly the key used by the client/server. This allows the WX Series to read the flow decrypted and apply all its different optimizations like compression and caching or application acceleration. To enhance security, the traffic moving between the WX Series is encrypted using an IPsec tunnel to ensure privacy is retained.

### Application - and Protocol-specific Acceleration

The Application Flow Acceleration (AppFlow) technology improves the performance of specific applications and protocols – including Microsoft Exchange, Windows file services and web-based applications – over the WAN.

AppFlow for Microsoft Exchange and Windows and Linux file services improves application performance by accelerating their underlying protocols – MAPI and CIFS, respectively. These protocols send data in small blocks that must be received and acknowledged before the next block can be sent, requiring hundreds or even thousands of round trips to complete a single transaction. The AppFlow for Exchange and AppFlow for CIFS technology pipelines these data blocks in quick succession, delivering up to a 50-fold improvement in application performance, meeting the needs of remote and branch office users accessing centralized applications or Network Attached Storage (NAS) data over the WAN.

AppFlow for HTTP accelerates web-based applications over the WAN by enabling WX Series platforms to learn and cache objects associated with URLs. Similar to MAPI and CIFS, HTTP submits a series of sequential requests for web objects, requiring tens or hundreds of round-trips between the client and server to build a web page. With AppFlow for HTTP, the WX Series platform transparently caches objects locally, resulting in much faster pages loads.

## Application Control

The WX Series platform's Quality of Service (QoS) capabilities allow IT to assign priority and set bandwidth levels to ensure that business-critical and latency-sensitive applications such as Voice over IP (VoIP) always have sufficient bandwidth. The easy-to-use Juniper QoS implementation preserves QoS markings applied by other devices as needed and transparently map traffic onto carrier classes of service.

In addition, a congestion control feature that tightly couples the WX Series platform's QoS engine with the MSR compression technology allows QoS policies to dynamically detect changes in bandwidth availability and adjust allocation and prioritization schemes accordingly.

The WX Series platform also offers a Policy-based Multipath feature which enables IT to assign applications to a specific path in locations served by multiple WAN links. The WX Series platform monitors loss and latency characteristics on each link and automatically diverts applications to the alternate path if performance falls below acceptable levels.

## WX CMS Software

An embedded WebView feature and the WX Central Management System (WX CMS) software provide visibility into and control over the WX Series devices. The WX CMS software allows IT to monitor application performance across multiple WX Series or WXC Series devices, enabling extensive configuration and management capabilities. Individual device monitoring and configuration is accomplished via the WebView device management feature or the command line interface (CLI).

## Easy Installation and Configuration

The WX Series platforms can be deployed and configured in just 10 minutes using a web-based installation wizard. The WX Series platform and WX CMS software also enable fully automated configuration; IT simply defines centralized configuration templates and, when remote WX Series devices boot up, they retrieve a network address via DHCP, locate the WX CMS software server through the domain name service (DNS), download their configuration file, and begin operation.

The WX Series platforms also support a number of redundancy features and configurations, including redundant power supplies, to ensure uninterrupted operation. In the event of any failure, the WX Series platforms automatically convert to hardware bypass mode, allowing traffic to pass through untouched.

The WX Series platforms operate independently and are transparent to other network devices. WX Series products can be installed directly inline between a LAN switch and WAN router, or they can be deployed offline attached to an available Ethernet port on the switch or router. The WX Series platforms also work effectively alongside VPN servers, firewalls, and other security devices, where they optimize traffic before it is encrypted.



WX15



WX20



WX60



WX100

## Features and Benefits

PRODUCT FEATURES	DESCRIPTION
Traffic services	IP payload compression, protocol acceleration, QoS, traffic visibility, application identification, route optimization, IPsec encryption, packet aggregation
Protocols supported	Any IP-based traffic (TCP, UDP, GRE, ICMP, L2TP, etc.)
Applications supported	All IP-based applications, including Microsoft Office applications, Oracle E-Business Suite, Sharepoint, Microsoft Exchange, Citrix, SAP, web-based applications, etc.
NETWORK INTEGRATION	
Installation	Inline between aggregation switch and edge router, or off WAN router using route injection (RIPv2), WCCPv2, or policy-based routing
Auto-deployment	No-touch auto-configuration available out of the box through WX CMS software
Transparency	Transparent bridge mode operation, configurable DSCP and IP port transparency
Topology support	Point-to-point, hub-and-spoke, full mesh
Network discovery	Via RIP v1/v2, OSPF, and router polling
Tunnel creation	Automatic or manual
Asymmetric routing support	Supported for both inline and off-path
Load balancing	Active/active or active/passive, with passive in hot standby
Fault-tolerant non-stop operation	10/100/1000BASE-T auto switch-to-wire on any power, hardware, or software failure condition
High availability	Backup device can support multiple primary devices; automatically fail-to-wire
QUALITY OF SERVICE	
Honor, preserve and/or set ToS/DSCP	Retain settings or prioritize using ToS/DiffServ values by application
Bandwidth allocation	Create traffic classes for bandwidth allocation with time of day option
Application identification	Automatic, based on source/destination IP address/port, ToS/DSCP, IP protocol, L7 identification for HTTP and Citrix; follows port hopping applications (FTP, Exchange)
Route optimization	Multipath: application level path selection based on link SLA
TRAFFIC ACCELERATION	
Packet Flow Acceleration	TCP Acceleration, Fast Connection Setup, and Forward Error Correction
Application Flow Acceleration	Microsoft CIFS, Linux file services, Microsoft Exchange and HTTP
DEVICE MANAGEMENT	
SNMP, Syslog	SNMPv2c, MIB II, WX Series Enterprise MIB and local Syslog
Secure remote access	SSHv1, SSHv2, and HTTPS (SSL)
Reports	26 device-level reports available through WebView; 38 network-wide reports available with WX CMS
Authentication, Authorization and Accounting	AAA local database, RADIUS and TACACS+ support
Network upgradeable	Via FTP, HTTP and TFTP; dual software images and configurations
MONITORING	
Compression statistics	Per device, per application, and per destination; both real-time and historical
WAN performance statistics	Network latency, loss, and availability for SLA monitoring and enforcement
QoS, bandwidth management	Per destination, per traffic class, real-time and historical
Acceleration	TCP session time and throughput; both real-time and historical
Application reporting	Detail by IP addresses, and/or port numbers, and/or IP protocol, and/or DSCP/ToS value, with greater detail by URL element or application type
Event/performance monitoring	Generate automatic alerts (SNMP traps, e-mail, console) for up to 200 administrator definable performance or system events

## Specifications

	WX15	WX20	WX60	WX100	WX STACK	
<b>Performance</b>						
Total reduction throughput speed	64 Kbps to 1 Mbps	64 Kbps to 2 Mbps	512 Kbps to 20 Mbps	1 Mbps to 20 Mbps	1 Mbps to 155 Mbps	
IPsec throughput	1 Mbps	2 Mbps	15 Mbps	15 Mbps	N/A	
Tunnels supported	Up to 6 with all features enabled	Up to 10 with all features enabled	Up to 110 with all features enabled	Up to 105 with all features enabled	Up to 660 with all features enabled	
<b>Connections</b>						
Network interfaces	Two copper fail-to-wire 10/100 Ethernet ports	Two copper fail-to-wire 10/100 Ethernet ports	Two copper fail-to-wire 10/100/1000 Ethernet ports	Two copper 10/100/1000 fail-to-wire Ethernet ports or two fiber 1000 Ethernet ports	WX Stack includes 1 WX100 and up to 6 WX Series clients (excluding WX15s and WX20s)	
<b>Power</b>						
Power requirement	100-240 VAC, 50-60 Hz, 50 Watts max or 170 BTU/hr	100-240 VAC, 50-60 Hz, 150 Watts max or 510 BTU/hr	100-240 VAC, 50-60 Hz, 150 Watts max or 510 BTU/hr	Dual 100-240 VAC, 50-60 Hz, 300 Watts max or 1025 BTU/hr		
<b>Dimensions and Weight</b>						
(W x H x D)	15.3 x 1.8 x 9.1 in (38.9 x 4.5 x 23 cm) 1 rack unit	17.1 x 1.8 x 14.3 in (43.4 x 4.5 x 36.3 cm) 1 rack unit	17.1 x 3.4 x 16.7 in (43.4 x 8.7 x 42.4 cm) 2 rack units	17.1 x 3.4 x 16.7 in (43.4 x 8.7 x 42.4 cm) 2 rack units		
Weight	4 lbs (1.8 kg)	19 lbs (8.6 kg)	20.2 lbs (9.2 kg)	30 lbs (13.6 kg)		
<b>Operating Environment</b>						
Temperature	41° to 104° F (5° to 40° C)	41° to 104° F (5° to 40° C)	41° to 104° F (5° to 40° C)	41° to 104° F (5° to 40° C)		
Humidity	10% to 85%, noncondensing at 95° F (35° C)	10% to 85%, noncondensing at 95° F (35° C)	10% to 85%, noncondensing at 95° F (35° C)	10% to 85%, noncondensing at 95° F (35° C)		
Maximum altitude	10,000 ft (3,048 m)	10,000 ft (3,048 m)	10,000 ft (3,048 m)	10,000 ft (3,048 m)		
<b>Non-operating Environment</b>						
Temperature	-40° to 158° F (-40° to 70° C)	-40° to 158° F (-40° to 70° C)	-40° to 158° F (-40° to 70° C)	-40° to 158° F (-40° to 70° C)		
Humidity	5% to 95%, noncondensing at 95° F (35° C)	5% to 95%, noncondensing at 95° F (35° C)	5% to 95%, noncondensing at 95° F (35° C)	5% to 95%, noncondensing at 95° F (35° C)		
Maximum altitude	40,000 ft (12,192 m)	40,000 ft (12,192 m)	40,000 ft (12,192 m)	40,000 ft (12,192 m)		
<b>Regulations</b>						
Emissions	FCC Class A, EN 55022 Class A, EN 55024 Immunity, EN 61000-3-2, VCCI Class A	FCC Class A, EN 55022 Class A, EN 55024 Immunity, EN 61000-3-2, VCCI Class A	FCC Class A, EN 55022 Class A, EN 55024 Immunity, EN 61000-3-2, VCCI Class A	FCC Class A, EN 55022 Class A, EN 55024 Immunity, EN 61000-3-2, VCCI Class A		
Safety	CAN/CSA-C22.2 No. 60950-1-03 - UL 60950-1 and EN 60950-1	CAN/CSA-C22.2 No. 60950-1-03 - UL 60950-1 and EN 60950-1	CAN/CSA-C22.2 No. 60950-1-03 - UL 60950-1 and EN 60950-1	CAN/CSA-C22.2 No. 60950-1-03 - UL 60950-1 and EN 60950-1		
Acoustic noise	Maximum noise level is less than 70 dB	Maximum noise level is less than 70 dB	Maximum noise level is less than 70 dB	Maximum noise level is less than 70 dB		

## Juniper Networks Services and Support

Juniper Networks is the leader in performance-enabling services and support, which are designed to accelerate, extend, and optimize your high-performance network. Our services allow you to bring revenue-generating capabilities online faster so you can realize bigger productivity gains and faster rollouts of new business models and ventures. At the same time, Juniper Networks ensures operational excellence by optimizing your network to maintain required levels of performance, reliability, and availability. For more details, please visit [www.juniper.net/us/en/products-services/](http://www.juniper.net/us/en/products-services/).

## About Juniper Networks

Juniper Networks, Inc. is the leader in high-performance networking. Juniper offers a high-performance network infrastructure that creates a responsive and trusted environment for accelerating the deployment of services and applications over a single network. This fuels high-performance businesses. Additional information can be found at [www.juniper.net](http://www.juniper.net).

## Ordering Information

The table below reflects base models only. Bandwidth upgrades (up to 1 Mbps for the WX15, 2 Mbps for the WX20, 20 Mbps for the WX60, and 155 Mbps for the WX100) and other options are also available.

Please contact your Juniper representative or reseller for details.

MODEL	DESCRIPTION
WX-15	WX15, incl. RTU SW license to 64 Kbps
WX-20	WX20, incl. RTU SW license to 64 Kbps
WX-60	WX60, Gigabit Ethernet, incl. RTU SW license to 512 Kbps
WX-100C	WX100C with copper interfaces, incl. RTU SW license to 1 Mbps
WX-100F	WX100F with fiber interfaces, incl. RTU SW license to 1 Mbps

### Corporate and Sales Headquarters

Juniper Networks, Inc.  
1194 North Mathilda Avenue  
Sunnyvale, CA 94089 USA  
Phone: 888.JUNIPER (888.586.4737)  
or 408.745.2000  
Fax: 408.745.2100  
[www.juniper.net](http://www.juniper.net)

### APAC Headquarters

Juniper Networks (Hong Kong)  
26/F, Cityplaza One  
1111 King's Road  
Taikoo Shing, Hong Kong  
Phone: 852.2332.3636  
Fax: 852.2574.7803

### EMEA Headquarters

Juniper Networks Ireland  
Airside Business Park  
Swords, County Dublin, Ireland  
Phone: 35.31.8903.600  
EMEA Sales: 00800.4586.4737  
Fax: 35.31.8903.601

To purchase Juniper Networks solutions, please contact your Juniper Networks representative at 1-866-298-6428 or authorized reseller.

Copyright 2010 Juniper Networks, Inc. All rights reserved. Juniper Networks, the Juniper Networks logo, Junos, NetScreen, and ScreenOS are registered trademarks of Juniper Networks, Inc. in the United States and other countries. All other trademarks, service marks, registered marks, or registered service marks are the property of their respective owners. Juniper Networks assumes no responsibility for any inaccuracies in this document. Juniper Networks reserves the right to change, modify, transfer, or otherwise revise this publication without notice.